

Venice

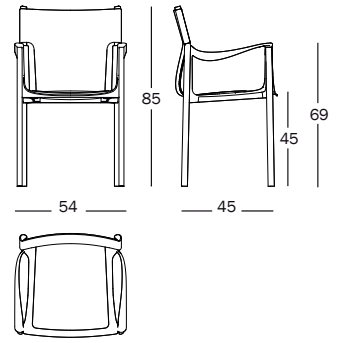
Design Konstantin Grcic, 2010, 2023

Chair with arms.

Seat in die-cast aluminium, polished or painted in polyster powder.

Legs in extruded aluminium polished or painted in polyster powder.

Seat and back in leather.



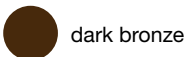
9401.79.00 | 0,275 m³ | 19,00 kg

Art. nr.	Chair in die-cast aluminium	Seat and back in leather
SD1760	painted	colours
SD1764	polished	colours

Die-cast aluminium

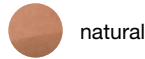


polished



dark bronze

Leather



natural



light blue

Test
ANSI/BIFMA X5.1-2011
Arm fatigue test EN 15373:2007, L3
Arm sideways static load test EN 15373:2007, L3
Leg forward static load test EN 15373:2007, L3
Seat and back fatigue test EN 15373:2007, L3
Seat front edge fatigue test EN 15373:2007, L3
Stability EN 1022:2005

Arm downwards static load test EN 15373:2007, L3
Arm impact test EN 15373:2007, L3
Back impact test EN 15373:2007, L3
Leg sideways static load test EN 15373:2007, L3
Seat and back static load test EN 15373:2007, L3
Seat impact test EN 15373:2007, L3
Vertical load on back rest EN 15373:2007, L3